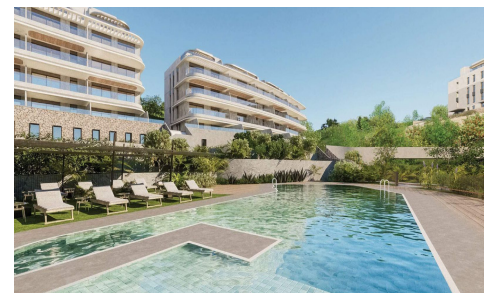
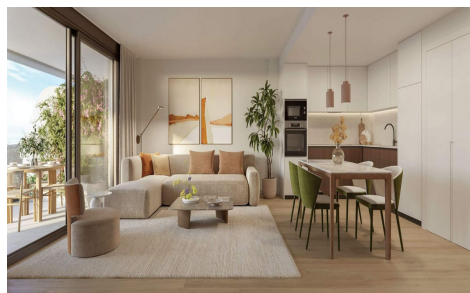
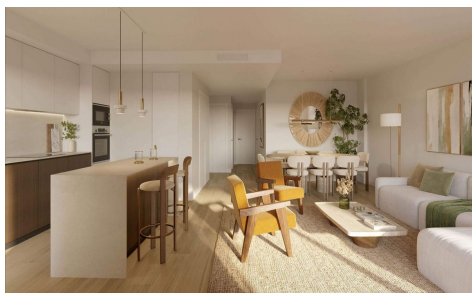


MLS70218P



**Apartment in El Chaparral**

**€311,000**



1



1



83m<sup>2</sup>



18m<sup>2</sup>



Prices from 349,000 as at 19/01/2026 End of build: Second quarter 2028\*INSPIRED BY NATURE This developments offers architecture for the senses â€”an immersive, emotional vision that redefines the Costa del Sol living experience. Rooted in nature and in perfect harmony with the landscape, it is embraced by the mountains, open to the sea, its breeze, and sunrises. A Mediterranean lifestyle reinterpreted as a living space, open to you, to your loved ones, deeply rooted in the land and crafted for the avant-garde. THE PROJECT Clavel Arquitectos has designed a project where the residential building is conceived as an organic extension of its surroundings. Its flowing curves and undulating forms embrace the topography, following the... (Ask for More Details!)