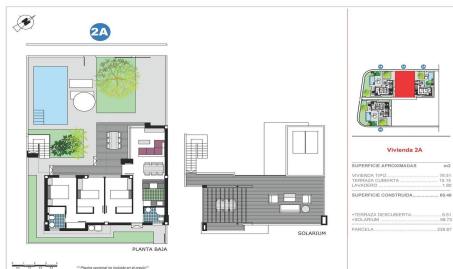




TR19361E

NEW BUILD SEMI-DETACHED VILLAS IN ELS POBLETES



3



2



88m²



239m²



N/A

NEW BUILD SEMI-DETACHED VILLAS IN ELS POBLETES New Build development will have 4 magnificent properties with gardens, private parking and the possibility of a private swimming pool. In an unbeatable location next to the town centre, shopping centre and all kinds of services, three-bedroom, two-bathroom homes with garden and solarium will be built. New Build semi-detached villas build over 1 floor and has 3 bedrooms, 2 bathrooms, open plan kitchen with the lounge area, fitted wardrobes, private garden with the off road parking space, private solarium. An options for a private pool at an extra cost. Features: •Built-in lined wardrobes, distributed with hanging bar,...(Ask for More Details!)